

SYLVANIA SMART+ ZigBee® Outdoor Flex

Full Color and Adjustable White Lighting Kit



Experience intelligent, connected lighting solutions in your home with SYLVANIA SMART+ connected lights and accessories. Using a ZigBee® compatible home automation hub, easily set up your devices to accommodate your daily routine by creating schedules and automations that fit your lifestyle. Our ZigBee smart home lighting products can be combined with many other ZigBee devices and platforms to build the ultimate smart home automation system.

Key Features & Benefits

- Smart lighting controlled by smartphone or tablet, as well as through voice integration
- Compatible with major smart home automation systems
- Create schedules and light scenes to enhance your experience. Group lights to control them all at once
- SMART+ System is controllable from inside the home or on the go
- Contains one 16-foot strip with power supply
- Millions of color options
- LED lamp adjustable between soft white, bright white, and daylight white
- On/Off/Dimming functions
- Color temperature tunable between 2700-6500 Kelvin
- Life: 20,000 hours rated life*
- Wet Rated for outdoor use

Product Offering

Ordering Abbreviation	Wattage	CCT	Contains
SMART+ Outdoor Flex	24	2700-6500K	Power Supply, Control Module and 1-16' Flex Strip

Application Information

Applications

- Back-lighting
- Border Lighting
- Cove lighting
- Edge Lighting
- Landscape Lighting
- Window and Entrance
- Path and Contour Marking

Market Segments

- Residential
- Small business

Application Notes

1. SMART+ Flex requires ZigBee compatible home automation hub (Sold separately)
2. Product activation requires active WiFi Network and ZigBee compatible home automation hub (must be placed in range of wireless router)
3. 2-year limited product warranty
4. Operating temperature between -4°F and +131°F (-20°C and +55°C)
5. Suitable for dry, damp, and wet indoor and outdoor locations
6. Not for use in totally enclosed fixtures
7. Not intended for use with dimmers, emergency light fixtures or exit lights
8. Lamp dims via wireless control and will not operate with a dimmer switch, remove all existing dimmers and replace with a regular switch, leave lamp in ON position
9. SMART+ Outdoor Flex strips cannot be cut

This device complies with part 15 of the FCC Rules. Operation is subject to the following two conditions: (1) This device may not cause harmful interference, and (2) this device must accept any interference received, including interference that may cause undesired operation. For FCC Part 15 user information, please see www.sylvania.com/fcc15b

*LED Lamp lifetime is defined as the number of hours when 50% of a large group of identical lamps reaches 70% of its initial lumens.

Specifications and Certifications



Contains:
FCC ID: DZO-LDV-AETHER
IC: 11099A-LDVAETHER



Specification Data

Catalog #	Type
Project	
Comments	
Prepared by	

Ordering Information

Item Number	Ordering Description	Wattage	Voltage	Length	CCT	Life
73685	LED24FLEXRGBWOUTDOORZBS+	24W	120	1-16 foot strip	2700-6500K	20,000

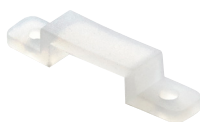
Ordering Guide

LED	24	FLEX	RGBW	OUTDOOR	ZB	S+
LED	Wattage: 24	Lamp Type FLEX	Red, Green, Blue and Adjustable White	Outdoor Rated	ZigBee	SMART+

What's Included



Screws x34



Mounting Clips x16



16 ft. Flexible Light Strip x1

Power Supply and Controller x1

LEDVANCE LLC
200 Ballardvale Street
Wilmington, MA 01887 USA
Phone 1-800-LIGHTBULB (1-800-544-4828)
www.sylvania.com

SYLVANIA and LEDVANCE are registered trademarks.
All other trademarks are those of their respective owners.
Licensee of product trademark SYLVANIA in general lighting.
Specifications subject to change without notice.

